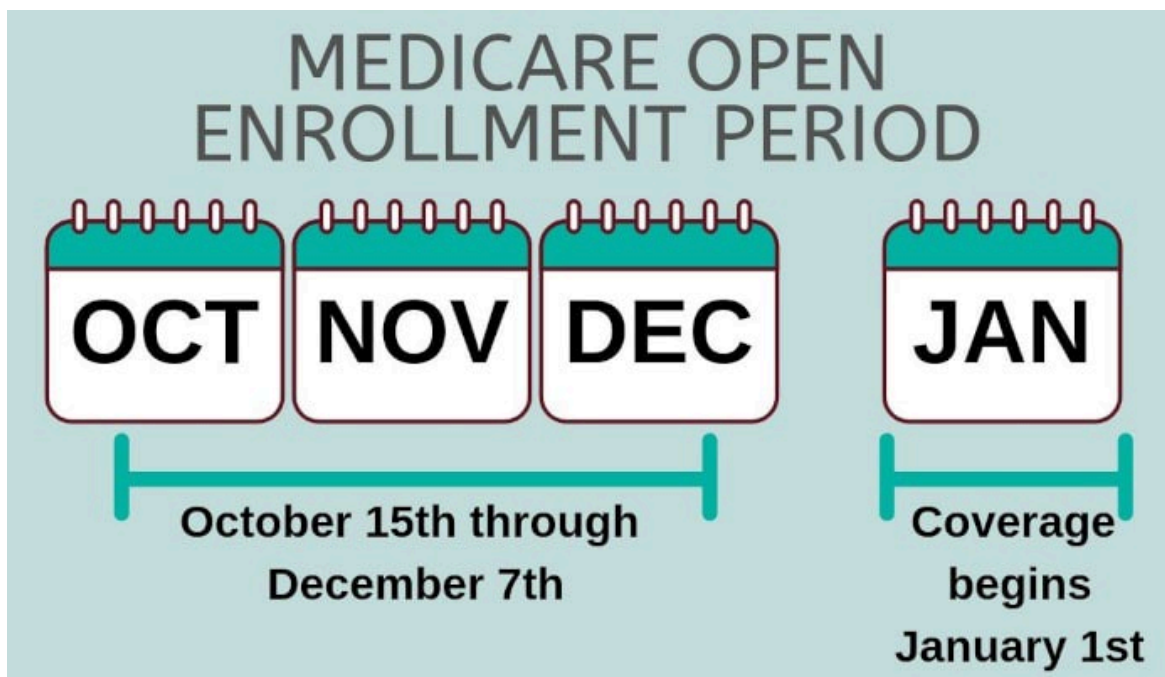


1.

~STILLWELL TIMES~

Newsletter

Annual Enrollment
Period is **HERE!**



Did you know that between October 15th and December 7th you can change your Medicare Advantage Plan? There are LOTS of changes happening with plans for 2026.

It is always important to not only review the plan benefits from year to year but to make sure that all your doctors are still in network and that your prescriptions are on the formulary. We are here to help you review.

If you have any questions, please call our office at 1-800-642-3490 and ask for Pam or Phylis.

~

WE WOULD LOVE TO HELP SOMEONE YOU KNOW!

If you have been happy with the plan your agent has provided for you and the service from the Stillwell Agency, we would very much appreciate the opportunity to help someone else you know.

Please have them call us at 1-800-642-3490 and we will have your agent contact them.

Here today to protect your tomorrows!



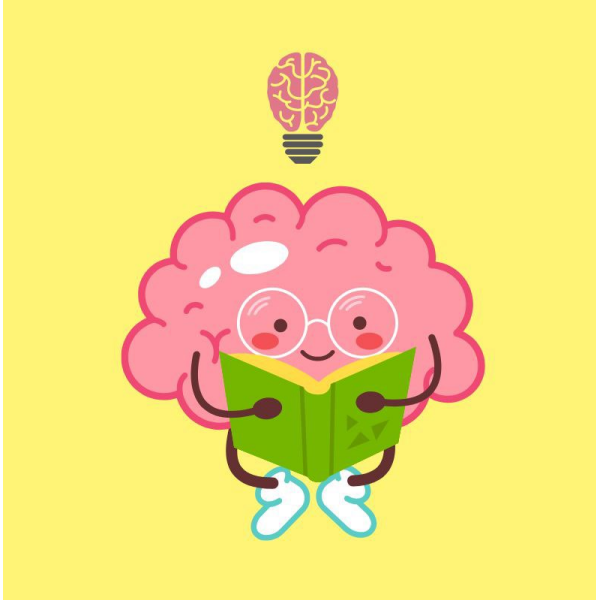
TURKEY CHILI



[Click here for a healthy chili recipe full of protein and fiber to keep you going!](#)

~

Trivia isn't just fun - it's good for your brain!



What year did The Beatles make their U.S. debut on "The Ed Sullivan Show"?

1. 1962
2. 1964
3. 1966
4. 1968

[Click here for answer.](#)

~

Adults 65 and older are at risk for severe illness and complications from influenza, make an appointment to get your flu shot soon!

~ robertjstillwell.com ~ [Facebook](#) ~